

Vascular Supply of the Uteroplacental Unit and Techniques for the Examination

- A notch is an early diastolic dip. In the second half of pregnancy this is evidence for an abnormal pulse wave reflection at the level of the spiral aa., presumably because of a faulty trophoblast invasion (Figs. 3.16, 3.17).
- Altered Doppler parameters are less important in predicting pregnancy risks than the demonstration of notching, which in 70% of cases is considered to be the determining sign of developing preeclampsia or of a pregnancy-induced hypertension (PIH).

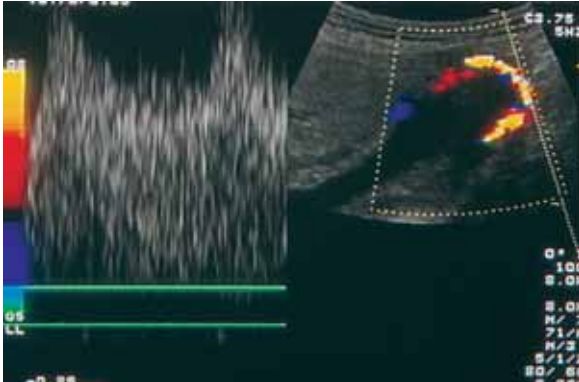


Fig. 3.12 Color display of the course of the uterine a. by Doppler spectrum. Normal examination. Note that the uterine a. is usually located under the skin close to the transducer.

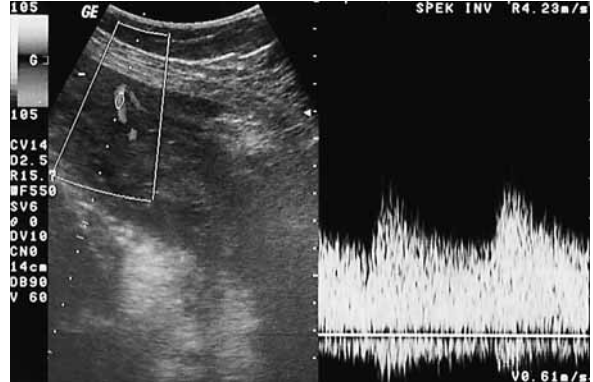


Fig. 3.13 Normal display of a uterine a.

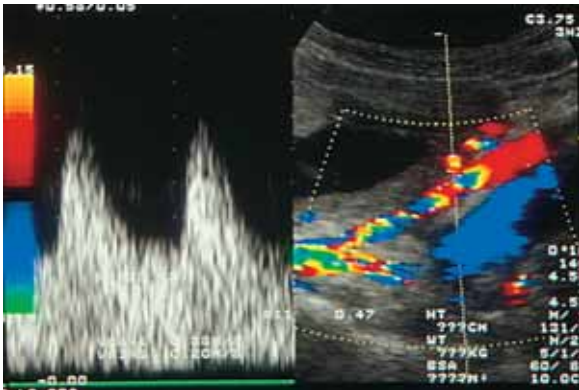


Fig. 3.14 Color display of the uterine a. Normal Doppler examination.

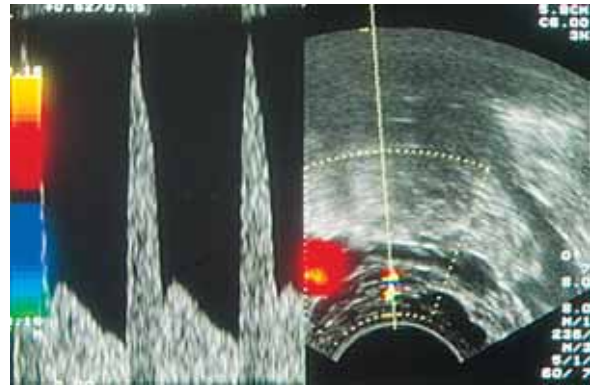


Fig. 3.15 Transvaginal display of the uterine a. by color Doppler and gray-scale Doppler with notch. This can be normal early in pregnancy.



Fig. 3.16 Uterine a. with notch.

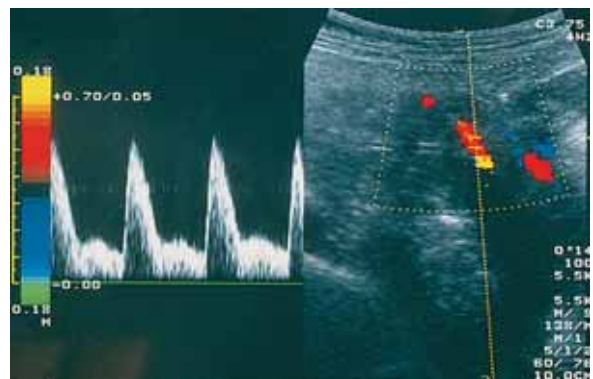


Fig. 3.17 Color display of the course of the uterine a. and of an abnormal flow profile with notch.